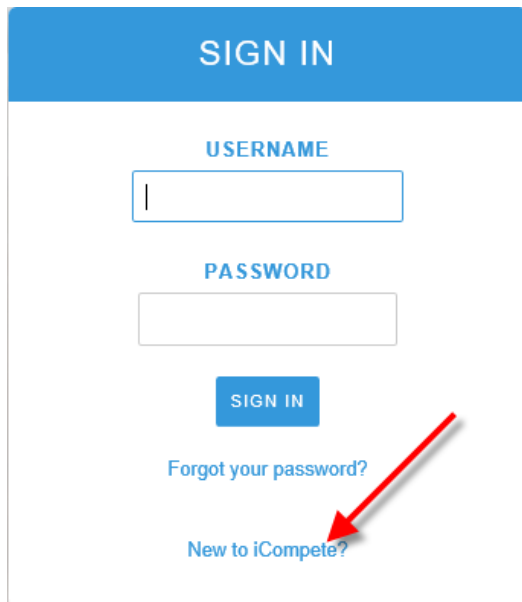


Creating a new iCompete account

1. Go to <http://ncha.icompete.net> and click on the new to iCompete option.



SIGN IN

USERNAME

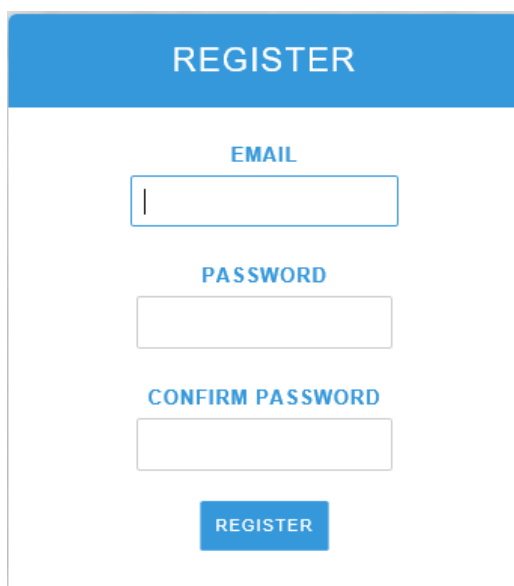
PASSWORD

SIGN IN

[Forgot your password?](#)

[New to iCompete?](#)

2. Enter in an email address and password for the account. You will need to use at least one number in the password field. Then press register.



REGISTER

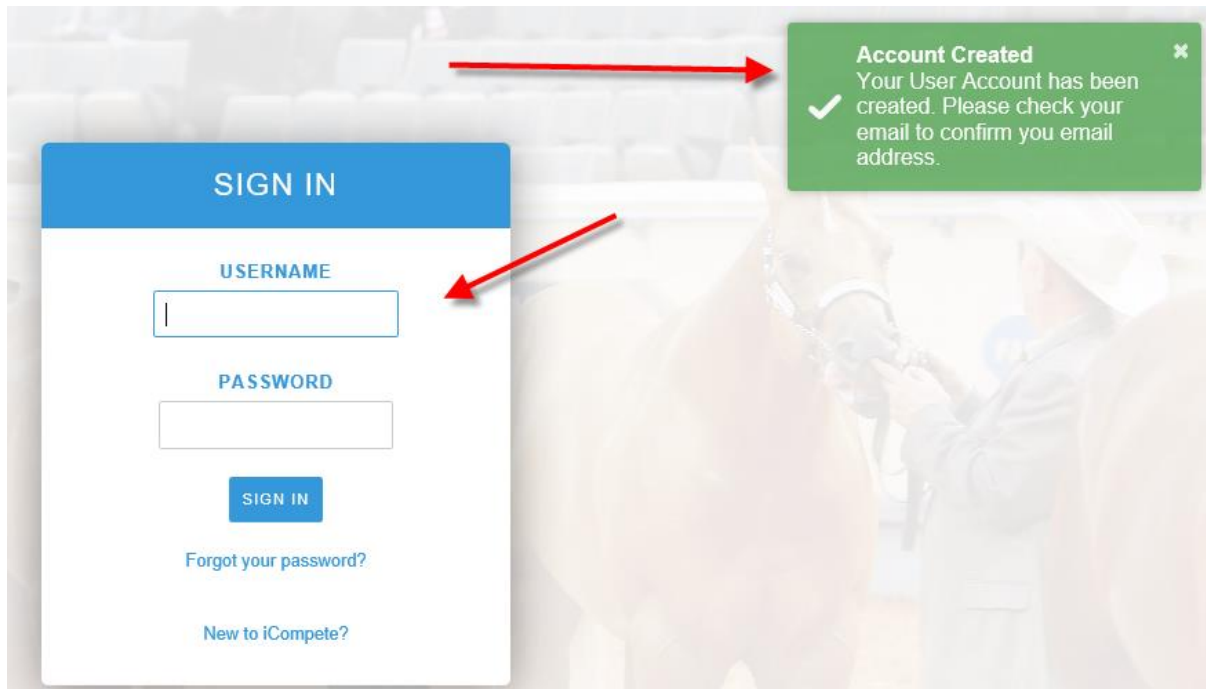
EMAIL

PASSWORD

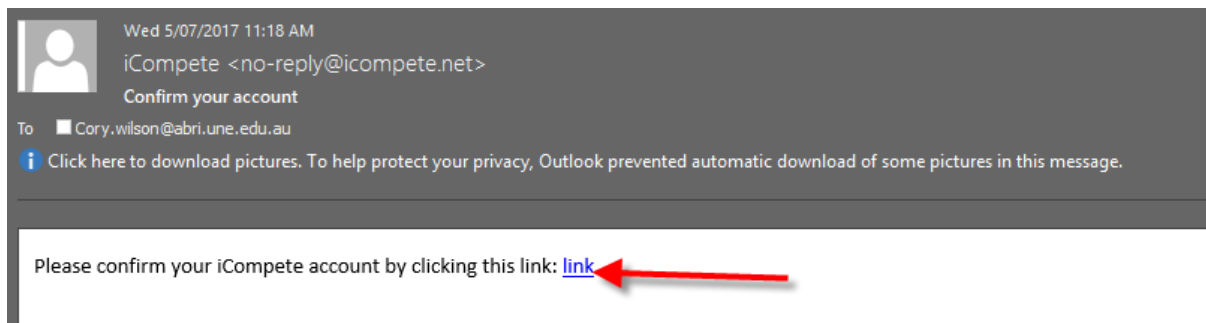
CONFIRM PASSWORD

REGISTER

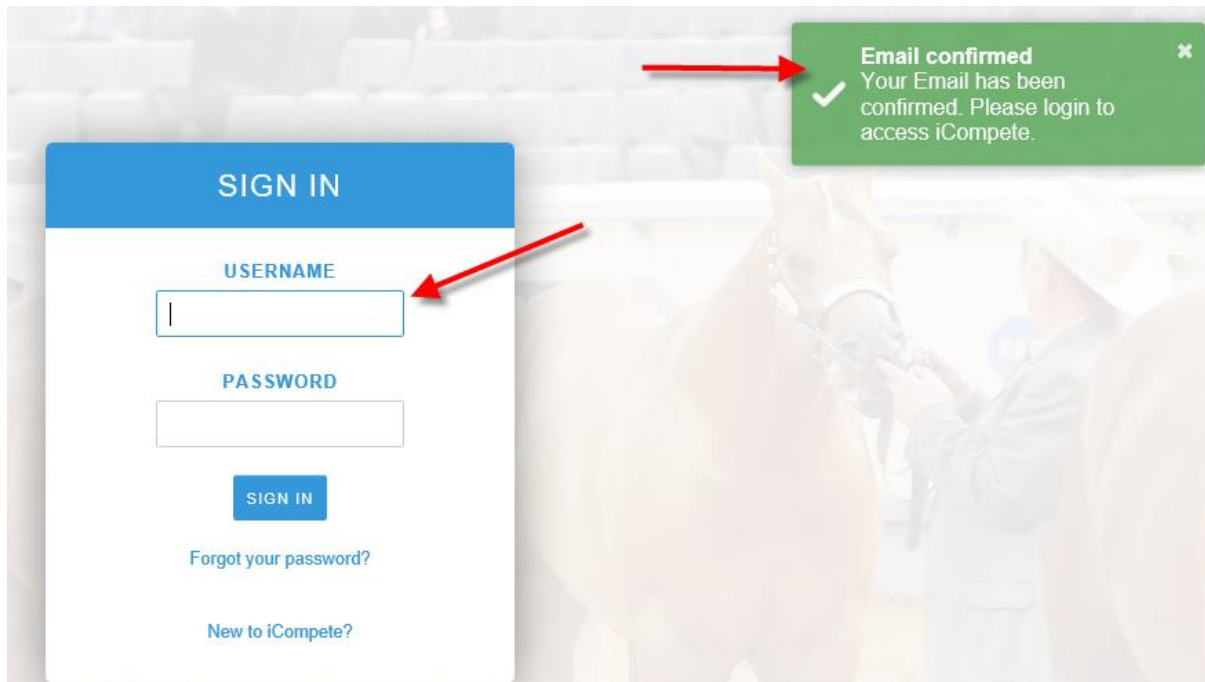
3. You will then be taken back to the login screen where you will get a message about having to confirm the email address entered.



4. Below is the email you will receive to confirm the account. Click on the link option to confirm the account.



- Once the email is confirmed you will be taken to the login screen with a message saying the email is confirmed. You will then be able to login.



- When you login you will need to associate the login to a members account. To do this you will be asked to enter the member Ident you wish to associate this login with. Enter the member ID and press associate.

Associate iCompete account with NCHA

Your iCompete user account needs to be associated with the National Cutting Horse Association of Australia

Please enter your NCHA membership number/identifier.

NCHA Membership Ident

eg ABC123

+ Associate

- Once you have entered a members ID you will be asked to verify some details for that account. Enter the details and press validate.

More information is required to associate your NCHA membership. Please enter the additional information below and click Verify.

Please note that the information you have on file with NCHA may not be current. The information you enter is to verify your identity not as your actual/current contact info.

Email

Phone

PostCode

✓ Validate

8. Once the validation has been done you will be taken to the main screen where you can view your existing horses or add new horses to the NCHA database. You will also be able to nominate for upcoming events. For help on this please see the event entries tipsheet.

National Cutting Horse Association of Australia

Please select an option below



My Animals



Show Entries

If you have any questions about how these entries are done or work please feel free to contact the NCHA office on 0267659356